



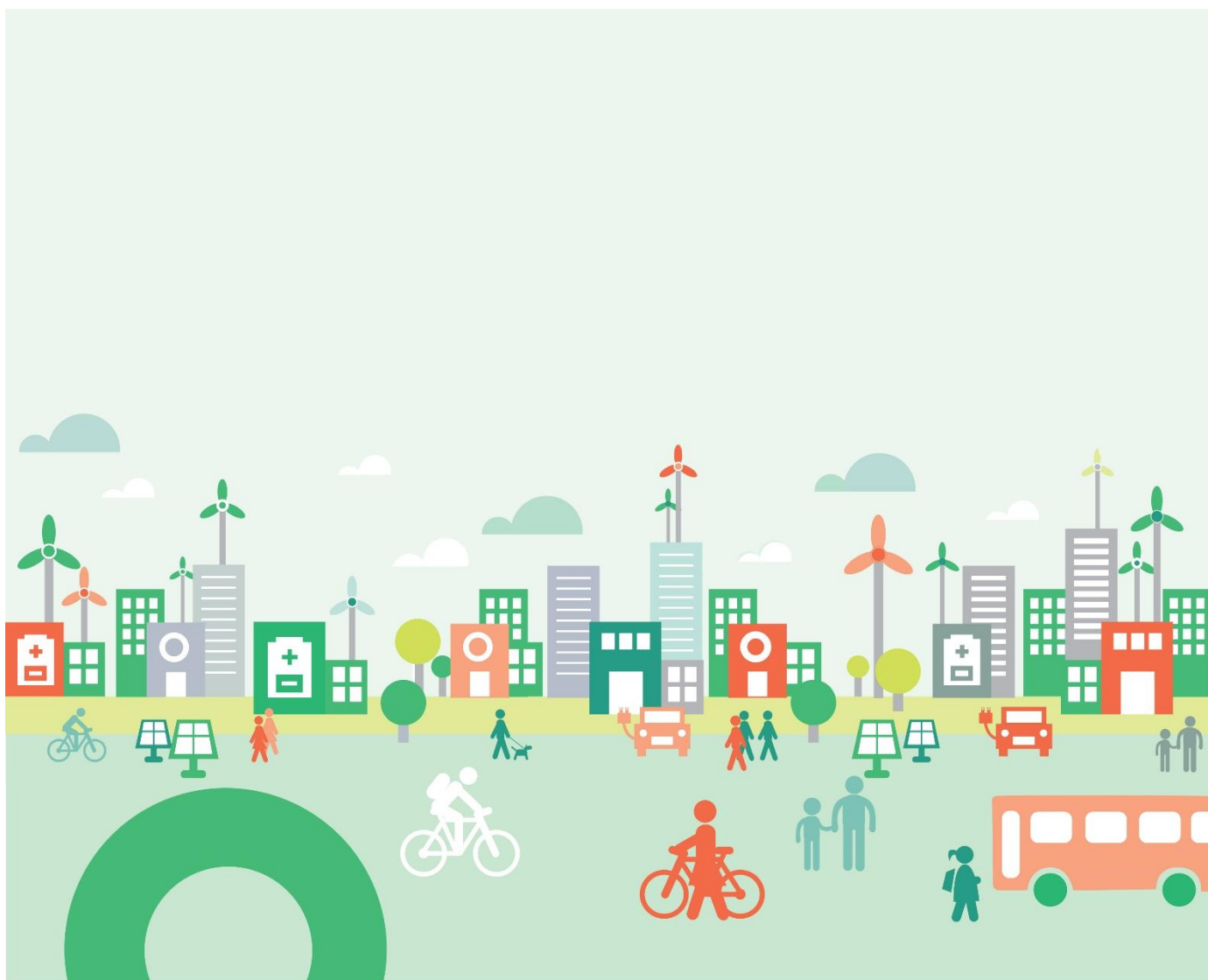
Research Centre on  
ZERO EMISSION  
NEIGHBOURHOODS  
IN SMART CITIES



# LINEAR OPTIMIZATION OF DISTRICT HEATING SYSTEMS

Description of an upgraded district heating module for eTransport

ZEN REPORT No. 9 – 2018





Research Centre on  
ZERO EMISSION  
NEIGHBOURHOODS  
IN SMART CITIES

## **ZEN Report No. 9**

Karoline Kvalsvik (Christian Michelsen Research)

Hanne Kauko (SINTEF Energy)

### **Upgraded district heating module for eTransport**

Keywords: district heating, modeling, planning tools, linear optimization

ISBN 978-82-536-1596-7

Norwegian University of Science and Technology (NTNU) | [www.ntnu.no](http://www.ntnu.no)

SINTEF Building and Infrastructure | [www.sintef.no](http://www.sintef.no)

<https://fmezen.no>

## Preface

### Acknowledgements

This report has been written within the Research Centre on Zero Emission Neighbourhoods in Smart Cities (FME ZEN). The authors gratefully acknowledge the support from the Research Council of Norway, the Norwegian University of Science and Technology (NTNU), SINTEF, the municipalities of Oslo, Bergen, Trondheim, Bodø, Bærum, Elverum and Steinkjer, Trøndelag county, Norwegian Directorate for Public Construction and Property Management, Norwegian Water Resources and Energy Directorate, Norwegian Building Authority, ByBo, Elverum Tomteselskap, TOBB, Snøhetta, Tegn\_3, Asplan Viak, Multiconsult, Sweco, Civitas, FutureBuilt, Hunton, Moelven, Norcem, Skanska, GK, Caverion, Nord-Trøndelag Elektrisitetsverk (NTE), Smart Grid Services Cluster, Statkraft Varme, Energy Norway and Norsk Fjernvarme.

### The Research Centre on Zero Emission Neighbourhoods (ZEN) in Smart Cities

The ZEN Research Centre develops solutions for future buildings and neighbourhoods with no greenhouse gas emissions and thereby contributes to a low carbon society.

Researchers, municipalities, industry and governmental organizations work together in the ZEN Research Centre in order to plan, develop and run neighbourhoods with zero greenhouse gas emissions. The ZEN Centre has nine pilot projects spread over all of Norway that encompass an area of more than 1 million m<sup>2</sup> and more than 30 000 inhabitants in total.

In order to achieve its high ambitions, the Centre will, together with its partners:

- Develop neighbourhood design and planning instruments while integrating science-based knowledge on greenhouse gas emissions;
- Create new business models, roles, and services that address the lack of flexibility towards markets and catalyze the development of innovations for a broader public use; This includes studies of political instruments and market design;
- Create cost effective and resource and energy efficient buildings by developing low carbon technologies and construction systems based on lifecycle design strategies;
- Develop technologies and solutions for the design and operation of energy flexible neighbourhoods;
- Develop a decision-support tool for optimizing local energy systems and their interaction with the larger system;
- Create and manage a series of neighbourhood-scale living labs, which will act as innovation hubs and a testing ground for the solutions developed in the ZEN Research Centre. The pilot projects are Furuset in Oslo, Fornebu in Bærum, Sluppen and Campus NTNU in Trondheim, an NRK-site in Steinkjer, Ydalir in Elverum, Campus Evenstad, NyBy Bodø, and Zero Village Bergen.

The ZEN Research Centre will last eight years (2017-2024), and the budget is approximately NOK 380 million, funded by the Research Council of Norway, the research partners NTNU and SINTEF, and the user partners from the private and public sector. The Norwegian University of Science and Technology (NTNU) is the host and leads the Centre together with SINTEF.



<https://fmezen.no>



@ZENcentre



FME ZEN (page)

## Abstract

eTransport is a linear optimization tool for evaluating energy supply alternatives for building areas. This report describes an improved, more realistic district heating (DH) module that has been developed for eTransport. The new module includes several improvements as compared to the previous module:

- Varying mass flow that depends on the heat load, as opposed to constant mass flow.
- Pressure included as a variable, with certain limits for minimum pressure and minimum pressure drop at the loads.
- Calculation of pumping power is included in the module, and pumping power due to pressure losses in pipes and at loads is included in the objective function
- A more realistic calculation of heat losses included, and the heat losses are included in the heat load
- The module allows supply flow to both directions in a pipe; a property which is relevant when more heat sources are present in a DH grid. This feature is however yet to be tested properly.

The report presents the main equations required for mathematical description of a district heating system are presented, followed by the approach taken for linear representation of these equations, required for eTransport. The report includes a brief evaluation of the module using a simple test network, and discusses the simplifications and limitations of the present module, giving suggestions for further improvements.

## Sammendrag

Fjernvarme er en viktig muliggjørende teknologi i det grønne skiftet. Fjernvarme kan nyttiggjøre energi som ellers ville gått til spille, slik som gjenvunnet varme fra avfallsforbrenning og industriprosesser; eller mindre spillvarmekilder tilgjengelig i byer, slik som datasentre og store matvarebutikker. Ved hjelp av et fjernvarmesystem kan slike kilder anvendes til oppvarming av boliger og næringsbygg. Med et godt samspill med kraftnettet bidrar fjernvarme i tettbygde strøk til å avlaste kraftnettet og tilgjengeliggjøring elektrisitet til andre formål enn til oppvarming.

Bygging av et fjernvarmesystem krever store investeringer i startfasen, og dermed er det viktig å vite hvilke energikilder man bør velge til et gitt område for å minimere tilbakebetalingstiden. Det er derfor vanlig å bruke planleggingsverktøy for sammenlikning av ulike energiforsyningsalternativer til området. eTransport er et slikt verktøy, lagd av SINTEF Energi i 2006. Verktøyet skal oppgraderes og videreutvikles i FME ZEN. eTransport omfatter flere energibærere, og finner den optimale måten til å drifte energisystemet, samt en optimal ekspansjonsplan i et geografisk definert område. I mange tilfeller vil det være konkurransen mellom ulike energibærere: behovet for oppvarming kan dekkes av elektrisitet eller av et fjernvarmesystem og varme kan genereres fra kilder. eTransport beregner de årlige driftskostnadene for ulike energisystemdesign, og sender disse til en investeringsmodell som finner en optimal ekspansjonsplan.

Denne rapporten beskriver en oppgradering av fjernvarmemodulen i eTransport. I den tidligere versjonen av eTransport var modulen for beskrivelse av et fjernvarmesystem svært forenklet. Den oppgraderte modulen er mer realistisk i forhold til beregning av massestrøm, varmetap, trykktap og pumpearbeid. Modulen tillater dessuten forsyning av varme i begge retninger i et rør, noe som kan være aktuelt i et varmenett som utnytter flere, distribuerte varmekilder. eTransport et lineært optimalisverktøy, og rapporten presenterer den valgte tilnærmingen for lineær formulering av de viktigste likningene for beskrivelse av et fjernvarmesystem.

# Contents

Preface .....	3
Abstract .....	4
Sammendrag.....	5
1 Introduction.....	7
1.1 A notion on the types of components in eTransport .....	7
2 Mathematical description of a DH system.....	8
2.1 Heat flow.....	8
2.2 Heat losses .....	8
2.3 Pressure drop and pumping power.....	9
3 Linear representation of a DH system .....	12
3.1 Heat flow.....	12
3.2 Heat losses .....	14
3.3 Pressure drop.....	15
3.4 Pumping power .....	18
3.5 The objective function for the DH model .....	21
4 Evaluation of the new module .....	22
5 Conclusions and future work .....	23
References	25
A1. Appendix 1: Parameters, variables and sets .....	26
A2. Appendix 2: Objective function and the constraints.....	29

## 1 Introduction

eTransport is an economical tool for finding the most optimal energy supply alternative for a building area, capable of evaluating several possible investments and energy flows for periods of several years in only a few seconds. Being a linear optimization model, a global optimum is guaranteed. Several types of energy carriers, as well as conversion possibilities between them, are included: electricity, gas, district heating (DH) and hydrogen. Moreover, several primary energy sources, with penalties depending on their costs and emissions are included: gas, biomass, municipal waste and oil, to mention a few. The primary energy sources are converted into the desired energy carriers, in this case heated DH water, through the use of for instance boilers or combined heat and power plants, in order to supply energy for the building area in question.

This report describes the upgrading of the DH module in eTransport. The previous DH module had several important weaknesses:

- It had no variable for pressure, which is crucial for acceptable design and operation.
- The mass flow was set to a constant.
- It would allow any return temperature at a load.
- The effect of pipe length on heat and pressure losses was not included
- Calculation of heat loss was incorrect, in particular for the return line.

The goal for the development of the new DH module has been to address these drawbacks. This document is organized as follows: Chapter 2 introduces the governing, physically correct equations needed to describe a DH system. Chapter 3 presents the chosen approach for linear representation of these equations, including suggestions for future improvements. Chapter 4 shows results from evaluation of the implemented model, while Chapter 5 concludes the report and gives suggestion for further work.

### 1.1 A notion on the types of components in eTransport

eTransport has been programmed using AMPL (A Mathematical Programming Language), which is a programming language for mathematical programming, particularly suited for formulating optimization problems (Fourer 2003). Being a mathematical programming language implies that the syntax resembles to a large degree the actual mathematical formulations.

AMPL has the following fundamental components:

- **Sets** are used for indexing, that is, a variable or a parameter may have different value for different elements in a set. In a DH system, typical sets are e.g. the junction points (nodes), the load points, and production (source) points.
- **Parameters** are elements whose value is known or can be calculated at the start of a calculation. A parameter may be defined as an integer.
- **Variables** are elements whose value is not known beforehand and which may vary during the simulation. Variables are often subject to a constraint or objective. A variable may be defined as binary.
- **Constraints** are the equations determining the behaviour of variables. These equations need to be linear in terms of variables, however nonlinear equations may be applied for parameters.

- **Objectives** or objective functions describe the function that the user wishes to minimize. This function is generally a summation of different variables over certain sets, weighed with a certain penalty. In eTransport, each submodel (e.g. the DH module, gas supply, electricity supply) has one objective function, which will be passed on and minimized by the universal model.

The sets, parameters and variables included in the DH module are listed and explained in Appendix A1. The objective function and the constraints are listed in Appendix A2.

## 2 Mathematical description of a DH system

A DH grid in any model is represented by a set of equations. This chapter describes the main variables the DH model must be able to calculate at an appropriate accuracy – the transported heat, heat loss, pressure drop and required pump work – and presents the exact equations representing these variables.

### 2.1 Heat flow

Transport of heat is the most important function of a DH system, and the simplest DH model one could imagine would simply involve heat flowing from a source to one or several sinks. This is the sole purpose of DH and this variable must thus be included in the model. Ideally, the heat flow at sources and loads should be modelled as:

$$\dot{Q} = \dot{V}c_p(T_{in} - T_{out}) \quad (1)$$

where  $\dot{Q}$  is the heat flow (in [kW]);  $\dot{V}$  the volume flow of water (in [m<sup>3</sup>/s]);  $c_p$  is the specific heat capacity of water (here given in [kJ/(m<sup>3</sup>·K)]); and  $T_{in}$  and  $T_{out}$  are the temperatures in and out (in [°C]), respectively.

The total heat flowing in and out of a node should be equal:

$$\sum_i \dot{Q}_i = \sum_i \dot{V}_i c_p T_i = 0 \quad (2)$$

Here,  $\dot{Q}_i$  is a heat flow in or out of the node, and  $\dot{V}_i$  and  $T_i$  are the volume flow and temperature level of each stream in °C (minimum temperature in the system is set to be > 0). Volume flow and hence heat flowing out of a node are considered negative. The summation is hence over all heat flows in and out of a node.

Moreover, the sum of water flowing into each node should be zero, that is

$$\sum_i \dot{m}_i = 0 \quad (3)$$

where  $\dot{m}_i$  is a mass of water flowing in or out of the node. Again, streams flowing out of the node are considered negative. Assuming constant water density, which is very close to the truth, Equation (3) can be formulated in terms of volume flow as

$$\sum_i \dot{V}_i = 0 \quad (4)$$

### 2.2 Heat losses

Heat losses is the second most important variable to consider. Heat losses may constitute 10-25 % of the heat supplied to the grid, and have thus substantial impact on primary energy demand and emissions seen from a supplier side. It will be very important to know whether 3 or 25 % losses are expected, as the heat supply must be 3.1 or 33 % higher than the heat demand, respectively. Models



not including heat losses could thus be far off in estimating required heat supply and associated costs. Estimating the losses as a constant percentage of the heat demand could also be a costly mistake to make.

The actual amount of heat losses varies significantly from system to system, depending on the supply temperature level, heat transport distance and level of insulation in pipes. In new areas with well-insulated houses, high heat demand density (heat demand per unit area) and low supply temperature level, the heat losses per metre may be low; however the relative heat losses may be high due to the low heat demand. More detailed and physically correct model studies have shown losses of only 3-5 % for a well-insulated low temperature grid (Kauko, 2018). Hence, the effect of insulation, temperature level and distance between the loads must be included for correct estimation of the heat losses.

Heat losses depend on the geometry and insulation of the pipe, and for twin pipes often used for smaller pipe diameters in DH systems, rather complex formulae are applied (see e.g. (Wallentèn, 1991)). The principle for calculating heat losses can be well understood by considering the simpler equation for heat loss for a single, circular, concentric pipe:

$$\dot{Q}_{loss} = 2\pi Lk \frac{T_{water} - T_{amb}}{\ln(D_o/D_i)} \quad (5)$$

In this equation,  $L$  is the pipe length,  $k$  the thermal conductivity of the insulation (also known as the  $\lambda$ -value),  $D_o$  and  $D_i$  are the outer and inner diameters of the pipe and  $T_{water}$  and  $T_{amb}$  are the temperatures of the water and the ambient, respectively.

### 2.3 Pressure drop and pumping power

Pressure drop in pipes and the associated pumping power are less important for the total energy demand in a DH system as the pumping power is typically one order of magnitude lower than the heat loss and two orders of magnitude lower than the heat demand. Nevertheless, pressure loss is the determining factor for dimensioning of pipes and hence important considering investment costs. Pipes and other hydraulic equipment are designed for a certain maximum pressure, which depends on the pipe diameter and maximum mass flow. In the DH system in Trondheim, the pressure should never exceed 10 bar. A model should preferably deliver a warning if the maximum pressure is exceeded (not included in the present module). The pipe pressure can be reduced by increasing the diameter of the pipes, however higher pipe diameter yields higher investment costs and heat losses. Hence the lowest possible pipe diameter is generally chosen, still capable of delivering the required maximum mass flow during peak heating demand periods.

The pressure drop  $dp$  in a circular pipe can be calculated using the Darcy-Weisbach equation (Fredriksen & Werner, 2014):

$$dp = f \frac{\rho L}{2D} \dot{V}^2 \quad (6)$$

where  $f$  is a friction factor,  $L$  the pipe length,  $D$  the pipe diameter and  $\rho$  the fluid density. The pipes are normally designed based on a maximum allowed pressure drop per metre at a given maximum water

flow,  $\dot{V}_{max}$ , known as the the  $R$ -value. Using the  $R$ -value, Equation (6) can be simplified to (Fredriksen & Werner, 2014):

$$dp = RL \left( \frac{\dot{V}}{\dot{V}_{max}} \right)^2 \quad (7)$$

Here, a constant friction factor has been assumed, which is a valid assumption under normal operational conditions. The main advantage of this equation is that it only contains parameters that the industry is familiar with.

Pressure drop is what causes the demand for pumping water. The power demand  $P$  of a pump is given by:

$$P = \frac{dp\dot{V}}{\eta} = \frac{RL}{\eta} \left( \frac{\dot{V}}{\dot{V}_{max}} \right)^2 \dot{V} \propto \dot{V}^3 \quad (8)$$

where  $dp$  is the pressure lift of the pump (in [Pa]),  $\dot{V}$  the volume flow through the pump and  $\eta$  is the pump efficiency. In reality,  $\eta$  is a function of the volume flow and the pressure lift. Modelling it as constant has been tested to be a fair approximation, also in more complex models (Kauko, Kvalsvik et al. 2017, Kauko, Kvalsvik et al. 2018). It is noted that the pump work represents an electricity demand and should perhaps be converted to an electricity demand of the heating module, not unlike the heat and electricity conversion in the already existing heat pump model.

DH pumps are generally placed at the heat source. The required pressure lift is then determined by the total pressure drop from the heat supplier to the load furthest away multiplied by two (for water flow out and back), plus the pressure drop at the loads. This principle is illustrated in Figure 1.

Regarding the pressure drop at the loads; the DH supplier is obliged to deliver sufficient pressure drop to guarantee enough mass flow at each load. In Trondheim, this minimum pressure drop,  $dp_{min}$ , is set to 0.7 bar. In reality, the pressure drop will be 0.7 bar only at the load furthest away from the heat supplier owing to the pressure drop in pipes, as illustrated in Figure 1. Hence, at most loads the pressure loss is much larger than 0.7 bar. The excess pressure drop is generally handled by valves, and is pure loss for the system. This loss is not included in the module at present (see section 3.4).

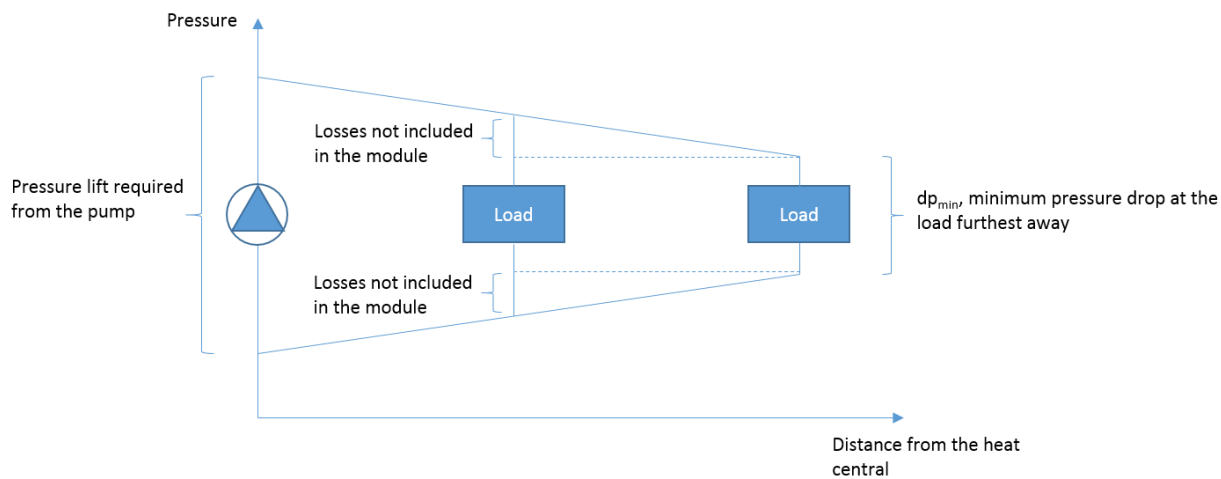


Figure 1:  
Illustration of the pressure drop as a function of distance from a heat central, and the pressure losses occurring at loads

### 3 Linear representation of a DH system

As shown in Chapter 2, all the main equations representing a DH system are non-linear, apart from the mass conservation and heat loss equations. The challenge then is to represent a DH system using only linear equations; and the chosen solutions to describe heat flow, heat losses, pressure drop and pumping power are presented in this chapter. Section 3.5 summarizes the chapter and introduces the final objective function for the DH model, to be passed on to the universal model.

#### 3.1 Heat flow

The mass balance (Equations (3) and (4)) is linear and used as it is, with one modification to be outlined in section 3.3. To preserve energy while having varying conditions and linear equations, Equation (2) for energy balance in each node, was changed into

$$\sum_i \dot{Q}_{less,i} = 0 \quad (9)$$

with the summation being again over all the in- and outgoing flows from a node, with negative sign for outgoing flows. Now,  $\dot{Q}_{less}$  is a new variable defined as *the heat removed from the water after it left the heat central*. That is,

$$\dot{Q}_{less} = \dot{V}c_p(T_{supply} - T_{water}) \quad (10)$$

Where  $T_{supply}$  is the supply temperature at the production site, and  $T_{water}$  is the water temperature at the node in question. Neither of these is a variable, and hence the challenge with the nonlinear energy balance equation is avoided. Notice that  $T_{water}$  is actually never calculated in the model – equation (10) is rather given as an exact definition for  $\dot{Q}_{less}$ .

At the loads, with heat demand  $\dot{Q}_{load}$ , we require

$$\dot{Q}_{less} + \dot{Q}_{load} + \dot{Q}_{deficit} \leq \dot{V}c_p(T_{supply} - T_{return}) \quad (11)$$

Where  $T_{return}$  is the return temperature from the load, and  $\dot{Q}_{deficit}$  is the heat demand that could not be delivered at the load with the given heat load, losses, temperature limits and flow. As seen from this equation, the heat demand of the load, as well as the possible heat deficit, is added to the variable  $\dot{Q}_{less}$ .  $\dot{Q}_{less}$  is thus much higher in the return pipes than in the supply pipes. The heat demand at each load point is a variable, received as an input from the universal model.

Based on Equation (11), the water flow must be so large that the demand is covered and the temperature changing within a realistic interval. If these limits are parameters, this is a linear equation. In the DH model, the return temperature was set to a constant value, making Equation (11) linear. In reality, the return temperature depends on the inlet temperature, as well as the conditions for heat exchange at the load. As the inlet (supply) temperature was set constant, it is a fair simplification to set the return temperature to be constant. A more sophisticated approach could be to make the return temperature a function of ambient and/or inlet temperature, which is quite realistic. The return temperature could also be calculated differently for each load, time step and/or season as well, if desirable.



### 3.2 Heat losses

Heat losses in DH systems are generally given as heat loss per metre pipe, and this value is available from pipe producers for a water temperature of 50 °C for a certain type of pipe. The ambient temperature was assumed to be equal to 10°C. With these simplifications, Equation (5) could be written as:

$$\dot{Q}_{loss} = K(T_{water} - T_{amb})L \quad (12)$$

Where  $T_{amb}$  is the ambient temperature,  $T_{water}$  is the momentary (unknown) DH water temperature and the heat loss factor  $K$  (in [MW/(K\*m)]) is defined as

$$K = \frac{\dot{Q}_{loss \text{ at } 50^{\circ}\text{C}}}{(50-10)^{\circ}\text{C}} \quad (13)$$

Equation (12) represents a straightforward approach for calculating heat losses, when assuming that the water temperature does not change along the pipe. Keeping the temperature constant is the same as assuming no heat loss; however, heat losses in the supply line do not, and should not, change the temperature significantly. Hence the heat loss in the supply line can be modelled as proportional to a constant  $T_{supply}$ ; i.e., setting  $T_{water} = T_{supply}$ , with only minor errors occurring.

As an example, assuming an ambient temperature of 25 °C, supply temperature of 65 °C, and a temperature at the load of 63 °C, the ratio of the modelled and real heat losses should be about

$$\frac{\dot{Q}_{loss,Model}}{\dot{Q}_{loss,Real}} \propto \frac{T_{supply} - T_{amb}}{T_{water} - T_{amb}} \approx \frac{65 - 25}{64 - 25} = 102.6\%$$

In this estimate, 64 °C was used for  $T_{water}$ , representing the average temperature between the source and the load. The resulting error was only 3 %, even though this example calculation represents one of the highest errors that could occur. Most of the losses occur during the winter, thus, a more typical situation would be  $T_{supply}$  of 100 °C,  $T_{amb}$  of 0 °C, and the supply water arriving at the load at 99°C. This would give an error of only ~0.5 %.

In the model, there is no separate variable for heat loss, but the losses are included in the  $\dot{Q}_{less}$ -variable at the end of each pipe ( $i,j$ ) in the supply line:

$$\dot{Q}_{less}(i,j, end) = \dot{Q}_{less}(i,j, start) + K(T_{supply} - T_{amb})L_{(i,j)} \quad (14)$$

Where  $\dot{Q}_{less}(i,j, start)$  and  $\dot{Q}_{less}(i,j, end)$  are the values for  $\dot{Q}_{less}$  at the start and end of pipe ( $i,j$ ), respectively,  $L_{(i,j)}$  is the length of the pipe. A limitation in this approach is that heat losses are calculated and allocated for a pipe even if there is no flow in the pipe. An improved model should have an approach to prevent this.

Heat losses in the return line are very small, and in any case much smaller than the losses in the supply pipes (Dalla Rosa, 2011). Losses in the return pipe can even be negative in twin pipes, as heat leaks from the supply to the return line. Thus, it was decided that the model should have heat loss free return lines. Even if this approach is somewhat wrong, recall that the approach to model heat losses is based

on using typical *total* heat losses in the grid per metre. Ergo the total heat loss will be correctly calculated if, the heat loss in the return lines are zero, and the return losses are moved to the supply line. The heat suppliers in the modelled grid receives the value  $\dot{Q}_{less}$  in the return line, which then contains the total amount of heating required: heat demand at the load plus heat losses (see Equation (11), without the need to multiply the temperature difference with the mass flow at the source. In this way, another non-linear equation is avoided.

To ensure the temperature at the loads is sufficiently high, a minimum temperature for the water arriving at the load,  $T_{supply,min}$ , was defined. The model must thus demand that

$$\dot{Q}_{less} \leq \dot{V} c_p (T_{supply} - T_{supply,min}) \quad (15)$$

This equation sets the temperature drop due to heat loss in pipes to be within an allowed range.

### 3.3 Pressure drop

The most important function of the pressure drop model is to provide a motivation to reduce the water flow – remember that the pressure drop  $dp$  is proportional to the 2<sup>nd</sup> power and pumping power to the 3<sup>rd</sup> power of water flow, as shown by Equations (6) and (8). Apart from this, the maximum limits for pressure is what determines the sizing of pipes and thereby investment costs of a system.

Pressure drop in pipes is a linear function of the pipe length and should have a value at each end of every pipe. All pressures at one point (where more pipe ends are connected) must also be equal for flow in the same direction (supply or return), but the absolute value for pressure in the supply and return line differ significantly (remember Figure 1). Since the pipe length and water flow out and back must be equal, i.e., the pressure drop in the supply and return line must be equal, it is sufficient to calculate the pressure drop in the return line to find the entire pressure drop in a grid. The lowest pressure value can be constant, whereas the highest value varies depending on the water flow in the pipes.

The quadratic dependence of pressure drop on the water flow could be approximated by a piecewise linear function; however, this would require different piecewise functions for all pipes. It was thus decided to use dimensionless variables which will be in the range 0-1 (later this was changed to -1 to +1, but this is a mere extension of what is described here). Using

$$\dot{V}^* = \frac{\dot{V}}{\dot{V}_{max}} \quad \text{and} \quad dp^* = \frac{dp}{dp_{max}} = \frac{dp}{RL} = \left( \frac{\dot{V}}{\dot{V}_{max}} \right)^2 = \dot{V}^{*2} \quad (16)$$

A piecewise linear pressure drop function for all pipes and water flows was obtained and is given by

$$dp^* = \begin{cases} 0.24 \dot{V}^*, & \dot{V}^* < 0.316 \\ \dot{V}^* - 0.24, & 0.316 \leq \dot{V}^* \leq 0.657 \\ 1.7\dot{V}^* - 0.7, & 0.657 < \dot{V}^* \end{cases} \quad (17)$$

which was modelled as

$$dp^* \geq \begin{cases} 0,24 \dot{V}^* \\ \dot{V}^* - 0,24 \\ 1,7\dot{V}^* - 0,7 \end{cases} \quad (18)$$

The pressure drop is hence modelled as  $dp^* \geq$  linear expressions, as equality formulations would require if-statements to determine when to use which expression, introducing non-linearities. As the pump work will increase with  $dp^*$ , the optimization algorithm will always prefer to set  $dp^*$  equal to the expressions in Equation (17), resulting in the relationship between  $V^*$  and  $dp^*$  shown in Figure 2. The expressions in Equations (17) and (18), and similar expressions presented later in this document, were all developed in Excel. The deviation between the modelled, piecewise equation and exact equation is only  $\sim 0.8\%$  on average and  $\sim 1.7\%$  at the most.

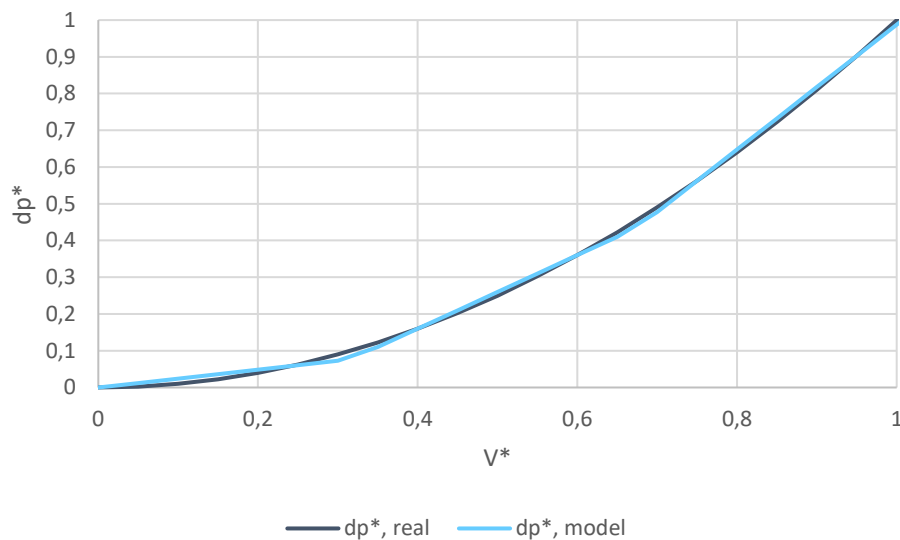


Figure 2:

Physically realistic dimensionless pressure drop "dp\*, real", and piecewise linear dimensionless pressure drop "dp\*, model"

A shortage with the pressure drop model as presented until now is that it is not able to handle negative water flow. The flow might become negative if more than one heat source is present (local, distributed heat sources will be an important topic in many case studies), and then, as the location of the heat source changes depending on the availability, heat may flow in different directions in a pipe. The approach taken to include negative flow is described in the following.

In the model, negative water flow was solved by giving all pipes two water flows: one which is always positive or zero, and another which is always negative or zero, denoted as  $\dot{V}_N$ . The mass balance was re-written as

$$\sum_i (\dot{V}_{i,in} + \dot{V}_{Ni,in}) = \sum_i (\dot{V}_{i,out} + \dot{V}_{Ni,out}), \quad (19)$$

where the summation on the left is over all the flows flowing in to the node, and the summation on the right is over outflowing flows. Negative flow was set to be zero at the sources and loads.



Energy balance is valid as it is. Heat losses depend on temperature and are not affected by negative flow but might be added at the wrong end of the pipe, hence be wrongly allocated; this has however no effect on the overall energy balance. Pressure drop on the other hand introduces a larger problem. Depending on the direction of the flow, the model might not know whether the pressure drop should be added to the inlet or the outlet of the pipe; that is, whether

$$p_{out} = p_{in} + dp \quad (20)$$

or

$$p_{in} = p_{out} + dp \quad (21)$$

For negative water flows, a negative pressure drop,  $dp_N$ , was therefore defined. The positive pressure drop was forced to be zero for negative flows and force  $dp_N$  to be zero for positive flows. Then

$$p_{out} = p_{in} + dp + dp_N \quad (22)$$

will always be valid. Forcing  $dp_N$  to be zero if the water flow is larger than zero and not otherwise again could introduce nonlinearity.  $dp$  is then defined in terms of the positive water flow (Equation (17)), and  $dp_N$  in terms of the negative flow analogously to Equation (17):

$$dp_N^* \geq \begin{cases} 0,24 \dot{V}_N^* \\ \dot{V}_N^* + 0,24 \\ 1,7\dot{V}_N^* + 0,71 \end{cases} \quad (23)$$

where again the \* denotes the dimensionless values.

Equation (23) will however allow the model to make the pressure difference between the ends of a pipe equal to zero. For negative flows, equation (17) requires that  $dp^*$  should be set to any value  $\geq 0$ , which means it could be set equal to  $-dp_N^*$ , and thus cancel the pressure drop entirely. This is seen by inserting  $dp^* = -dp_N^*$  into Equation (22). Similarly, for positive flow, the model can choose to set  $dp_N^* = -dp^*$ , yielding same pressure in both ends of the pipe. Hence, a way to prevent  $dp^*$  from taking a value when  $\dot{V}^*$  is zero, and  $dp_N^*$  from taking a value when  $\dot{V}_N^*$  is zero is necessary. Realizing that in terms of dimensionless variables,  $dp^*$  is always smaller than  $\dot{V}^*$ , except from when they are both zero or both one, the problem is solved by demanding that

$$dp^* \leq \dot{V}^* \quad (24)$$

and

$$dp_N^* \geq \dot{V}_N^* \quad (25)$$

Figure 3 visualizes the allowed range for  $dp^*$  as described above. In the figure, the following equations are included:

- The green line represents the ideal  $dp^*$ , as calculated from Equation (7);
- The black line represents the piecewise linear representation of  $dp^*$  based on Equations (18) and (23)
- The black dashed line represents the equality  $dp^* = \dot{V}^*$

- The blue solid line (c) represents the equality  $dp^* = 0.24 \dot{V}^*$
- The blue dashed line (b) represents the equality  $dp^* = \dot{V}^* + 0.24$
- The blue dotted line (a) represents the equality  $dp^* = 1.7\dot{V}^* + 0.71$

The pressure drop must always be on or between the blue dashed lines, by inequality constraints. The positive pressure drop must be in the region between the black dashed line and the blue lines in the first quadrant for positive flow, and zero otherwise, whereas the negative pressure drop must be between the black dashed line and the blue lines in the third quadrant for negative flows, and zero otherwise. These areas are marked yellow.

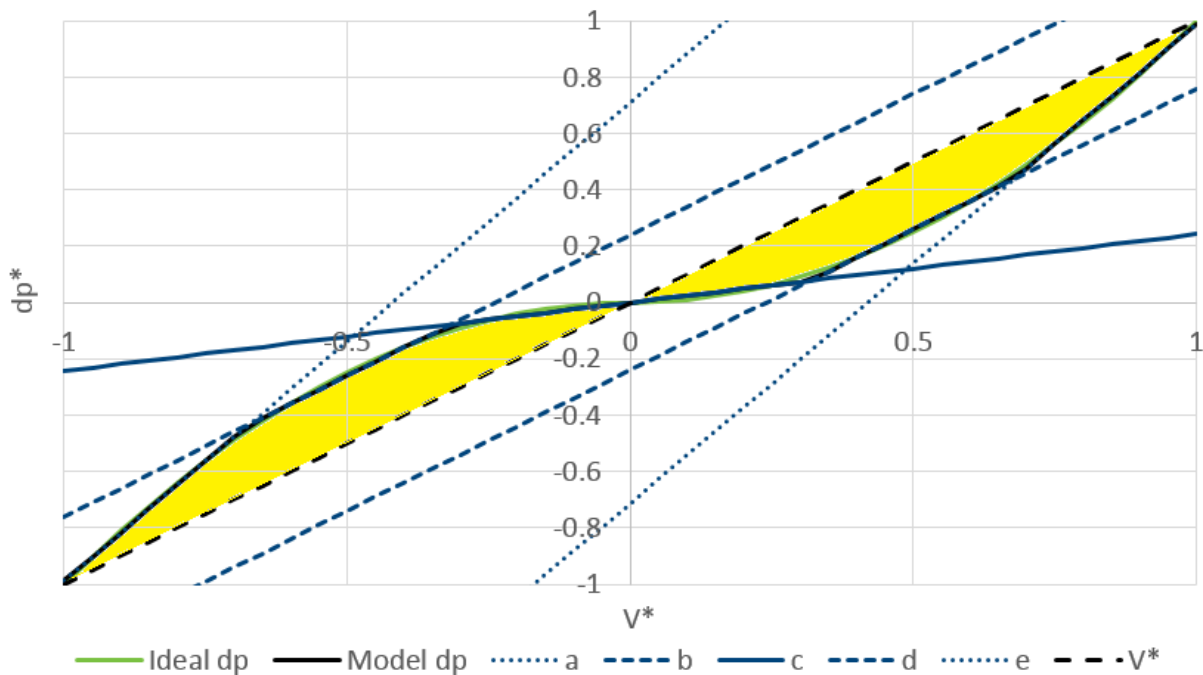


Figure 3:

Modelling dimensionless pressure drop  $dp^*$  based on dimensionless water flow  $V^*$ , limiting  $dp^*$  and  $dpN^*$  to be in the yellow areas.

### 3.4 Pumping power

Calculating the pressure drop in itself is only important for ensuring that the pressure does not exceed the allowable values. What is more interesting from an energy-economic perspective is to estimate the required pumping power. The calculation is divided into two parts: the required pumping power due to pressure drop in pipes, and the required power due to pressure drop at loads.

#### Pumping power due to pressure losses in pipes

Pumping power is calculated as a product of the pressure drop and the volume flow, as shown by Equation (8). There is no linear function to imitate the behaviour of the product of two variables; however, it is possible to represent non-linear relationships in a linear model by combining several equations. Therefore, a non-dimensional pumping power was defined in a similar manner as was done for pressure:

$$P^* = \frac{P}{P_{max}} = P \frac{\eta}{RL\dot{V}_{max}} = \frac{RL\dot{V}^3}{\eta \dot{V}_{max}^2} \cdot \frac{\eta}{RL\dot{V}_{max}} = \frac{\dot{V}^3}{\dot{V}_{max}^3} \quad (26)$$

That is,

$$P^* = \dot{V}^{*3} \quad (27)$$

which can be modelled by

$$P^* \geq \begin{cases} 0.1075\dot{V}^* \\ 1.0045\dot{V}^* - 0.3749 \\ 2.3095\dot{V}^* - 1.3317 \end{cases} \quad (28)$$

The actual equation for pumping power is plotted together with the piecewise linear representation in Figure 4. The figure shows a good fit between the two equations, with only ~1.1 % deviation on average and ~2.2 % at the most<sup>1</sup>. In the same way as the other dimensionless variables,  $P^*$  will always be  $\in [0,1]$ . The total pumping power due to pressure losses in pipes, denoted as *PipePower*, is then calculated using the piecewise linear expression based on

$$P = P^*P_{max} = \frac{RL}{\eta} \dot{V}_{max} P^* \quad (29)$$

That is,

$$P_{pipe} \geq \frac{RL\dot{V}_{max}}{\eta} \begin{cases} 0.1075 \dot{V}^* \\ 1.0045\dot{V}^* - 0.3749 \\ 2.3095\dot{V}^* - 1.3317 \end{cases} \quad (30)$$

Finally, the total pumping power due to friction losses in pipes multiplied with two to account for both supply and return lines (see Figure 1).

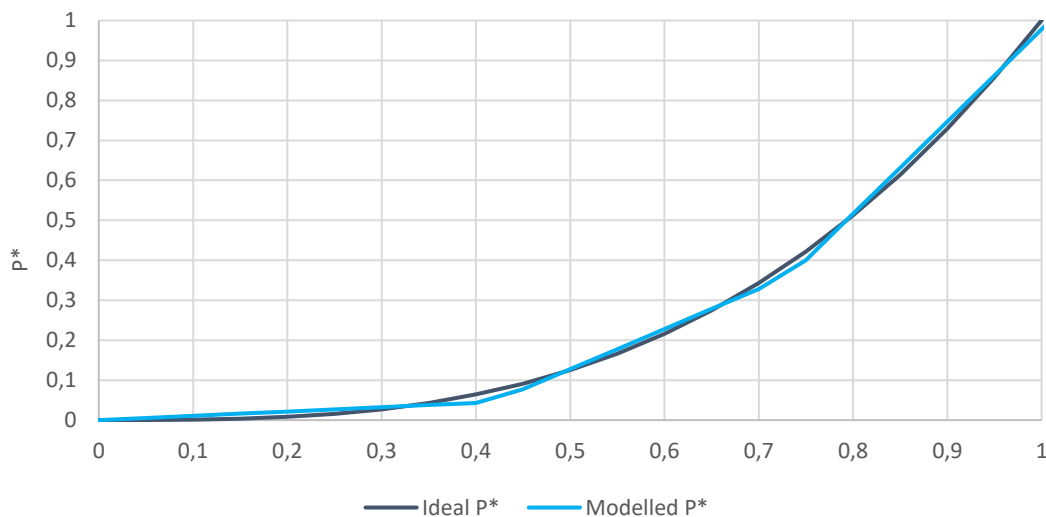


Figure 4:  
Ideal and piecewise linear representation of the equation for pumping power.

<sup>1</sup> The deviations and expression were determined using values of the dimensionless variables ranging from 0-1 with 0.05 interval, thus the deviations might have been marginally different if other intervals were used

The value of maximum flow  $\dot{V}_{max}$ , used in calculating the dimensionless variables  $\dot{V}$ ,  $P^*$  and  $dp^*$ , is in reality dependent on the maximum heat flow and temperature difference in each pipe according to Equation (1). Obviously, these values are unknown in the model. At present, the default value of the maximum volume flow in each pipe is calculated using an assumed maximum load for the entire system:

$$\dot{V}_{max} = \frac{\dot{Q}_{max}}{c_p(T_{supply,min} - T_{return})} \quad (31)$$

However; even the maximum load for the system is necessarily not known beforehand, and an approach for defining this should be included in the module. Alternatively; maximum flow in each pipe in a given network should be defined from a test run, and applied as input to following simulations. The effect of using different values of  $\dot{Q}_{max}$  in calculating  $\dot{V}_{max}$  on the final results is evaluated in Chapter 4.

### **Pumping power due to pressure drop at loads**

The pumping power at each load is calculated using Equation (8):

$$P = \frac{dp\dot{V}}{\eta}$$

where the volume flow at the load is calculated from Equation (1):

$$\dot{V} = \frac{\dot{Q}_{load}}{c_p(T_{in} - T_{out})}$$

Here,  $\dot{Q}_{load}$  is known from the  $\dot{Q}_{less}$  variable in the return line after the load, including the heat demand at the load as well as heat losses in the supply line (see sections 3.1 and 3.2).  $T_{in}$  and  $T_{out}$  are set equal to  $T_{supply}$  and  $T_{return}$ , respectively, in analogue to Equation (11).

The pressure drop  $dp$  is known for the load furthest away – this is the minimum pressure drop the DH provider is obliged to deliver for their customers, set to 0.7 bar in Trondheim (see section 2.3). For loads closer to the heat supplier however, the pressure drop will be larger than this (recall Figure 1). The local pressure drop at loads closer to the supplier is dependent on the local pressure, which is a variable; hence it cannot directly be used in Equation (8) for calculating the pumping power. For the sake of simplicity, this extra pressure drop was hence omitted in the present model. The pumping power due to pressure drop at each load point  $l$ , denoted as *LoadPower* in the model, was thus calculated from

$$P_{load} = \frac{dp_{min}}{\eta} \frac{\dot{Q}_{less}(l,j,return)}{c_p(T_{supply} - T_{return})} \quad (32)$$

where  $dp_{min}$  is the guaranteed pressure drop at the loads, with a default value of 0.7 bar, and  $\dot{Q}_{less}(l,j,return)$  is equal to the total heat flow resulting from each load, including both the actual heat demand and heat losses from pipes leading to the load point as written above.

Omitting the extra pressure drop at load points closer to the heat supplier might result in the total pumping power being somewhat underestimated. However, the pressure drop due to friction losses in each pipe – including the pipes leading to each load point – is included in  $P_{pipe}$ . Thus the model will

penalize for extra costs due to pumping power resulting from pressure losses in each pipe line and each load point, and favour shorter transport distances in choosing the heat source for each load when multiple heat sources are present.

### 3.5 The objective function for the DH model

The DH model has the following objective function to be passed to the universal model:

$$-0.0001 \sum_{s,t} \dot{Q}_{dump}(s,t) + \gamma \sum_{s,t} \dot{Q}_{deficit,1}(s,t) + \gamma \sum_{l,t} \dot{Q}_{deficit,2}(l,t) + 2 c_{dp} \sum_{(i,j),t} P_{pipe}((i,j),t) + c_{dp} \sum_{l,t} P_{load}(l,t)$$

Where the index  $s$  is over source points,  $l$  over load points,  $t$  over time steps,  $(s,i)$  over pipes starting from source points, and  $(i,j)$  over all pipes. The objective function has the following terms:

- The 1<sup>st</sup> term is for the heat flow that is dumped,  $\dot{Q}_{dump,load}$
- The 2<sup>nd</sup> term is for the heat deficit at sources,  $\dot{Q}_{deficit,1}$ , weighed with penalty  $\gamma$  with a default value of 100000000
- The 3<sup>rd</sup> term is for the deficit heat at loads,  $\dot{Q}_{deficit,2}$ , weighed with penalty  $\gamma$
- The 4<sup>th</sup> term is for the pumping power due to pressure losses in pipes, multiplied with the cost for pressure lift,  $l_{dp}$  (default 500), and with two to account for both supply and return lines. If pumping power demand is converted to electric demand, the cost for pressure lift could be calculated as  $l_{dp} = c_{el}/\eta$ , where  $c_{el}$  is the electricity cost and  $\eta$  is the pumping efficiency.
- The 5<sup>th</sup> term is for the total pumping power due to the pressure drop at the loads,  $P_{tot}$ , multiplied with the cost for pressure lift.

Thus, the objective of the DH module is to satisfy the demand with minimum heat deficit and minimum amount of pump work. For the module to cover the heat demand with a given set of heat supplies, the calculated heat demand, included in the  $\dot{Q}_{less}$  variable in the return line, is passed to the supply points,  $p$ , in the production constraint:

$$\sum_{(s,p) \text{ in } Supply2net} \varepsilon_{s,p} \dot{Q}_{supply}(s,p,t) + \sum_{(s,p) \text{ in } net2net} \varepsilon_{s,p} \dot{Q}_{net2net}(s,p,t) - \dot{Q}_{dump,load}(p,t) + \dot{Q}_{deficit,1}(p,t) = \sum_{(p,i) \text{ in } pipes} \dot{Q}_{less}(p,i,return)$$

Where

- The 1<sup>st</sup> term on the left hand side is heat flow from the source/supply points to the DH net, with  $\varepsilon_{s,p}$  as the connection loss factor
- The 2<sup>nd</sup> term is heat flow from different networks to the DH net, with  $\varepsilon_{s,p}$  as the connection loss factor
- The 3<sup>rd</sup> term is the dumped heat flow, as defined above. If the heat supply from the given set of sources exceeds the heat demand, this will result in dumping (rejection) of heat.
- The 4<sup>th</sup> term is the heat deficit at sources. If the given set of heat sources is not able to cover the heat demand, this results in heat deficit which will be penalized for.
- The term on the right hand side is the total heat demand assigned to the source in question.

## 4 Evaluation of the new module

While testing eTransport, a simple test network with two sources and two loads was used, shown in Figure 5. Load 2 had a constant heat demand of 0.2 MW, while load 1 had a varying demand, with a maximum value of 0.7 MW at 12. The heat sources consisted of one boiler using biomass and one gas boiler. The gas boiler was assigned a boiler penalty, while no penalty was assigned for the biomass boiler. Each pipe had the same length of 1000 m (the default length).

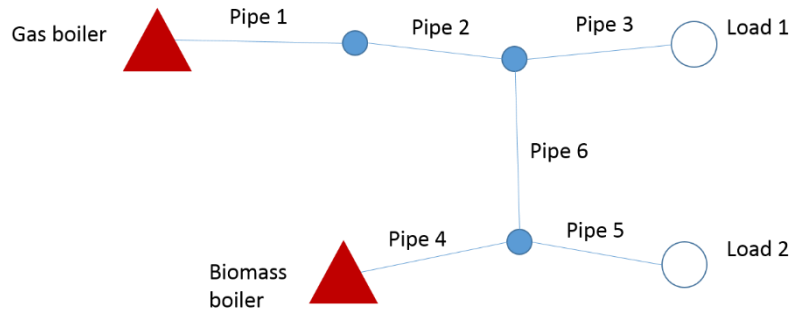


Figure 5

Test DH network used for testing eTransport while developing the module.

The test network was applied to study the effect of using different values of  $\dot{Q}_{max}$  in calculating the maximum volume flow (Equation (33), applied in calculating the default value). Table 1 presents the results for the objective function as well as the total pumping power due to friction losses in pipes, obtained with different values of  $\dot{Q}_{max}$ . It is clear that the result is highly dependent on the chosen maximum load. With a lower value for  $\dot{Q}_{max}$ , i.e. lower  $\dot{V}_{max}$ , the heat production is to a larger degree distributed between the two sources; whereas with higher values, all of the heat production is allocated to the bio source. This can be interpreted such that with higher costs for pumping power (resulting from lower value of  $\dot{Q}_{max}/\dot{V}_{max}$ ), the optimal solution is to use more heat sources closer to the load, even with the penalty of using more polluting sources.

Table 1

Costs in the objective function and  $P_{pipe}$  for different values of  $\dot{Q}_{max}$  for calculation of maximum flow.

$\dot{Q}_{max}$ [MW]	DH	Bio supply	Boiler	Gas supply	$P_{pipe}$ [MW]
0.5	192	1552	54	23	0.0178
0.6	168	1565	27	12	0.0143
0.7	147	1573	10	4	0.0142
0.8	136	1578	0.85	0.37	0.0148
0.9	124	1578	0	0	0.0123
1.0	115	1578	0	0	0.0098
1.1	111	1578	0	0	0.0072

A closer look at the pumping power due to friction losses in pipes,  $P_{pipe}$ , reveals that this cost mostly increases with lower  $\dot{V}_{max}$ , although the value flattens around 0.7 MW. This is better illustrated in Figure 6, showing the pumping power for each pipe and in total. Note that 0.9 MW is now the total maximum demand in the network, and 0.7 MW is the maximum demand for the load with highest

demand, residing furthest away from the least polluting source; or closest to the most polluting source. Based on Figure 6 it seems that using the total maximum load for the entire grid might result in underestimating the pumping power – and potentially less optimal use of the available heat sources. More testing using a network having more loads should be carried out to find out a better approach for defining the  $\dot{Q}_{max}$  for calculating the maximum flow. A better approach may be to use a test run to calculate the maximum mass flow in each pipe, and use these values as an input in following simulations.

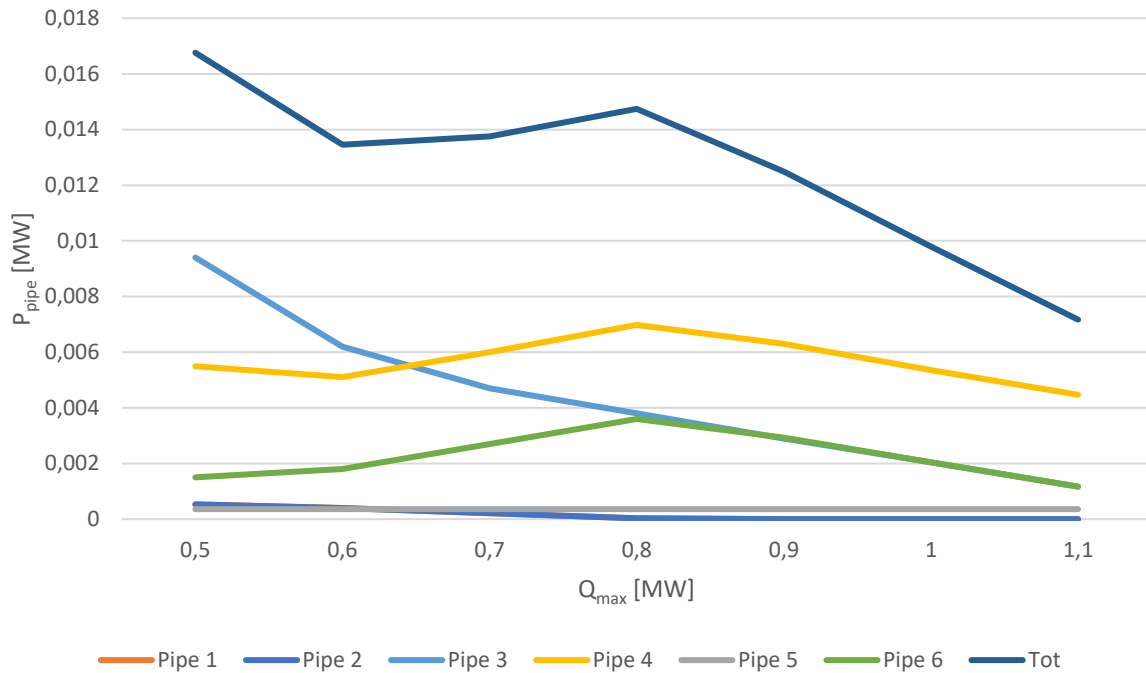


Figure 6

Pumping power for each pipe in the network and in total, for different values of  $\dot{Q}_{max}$  applied for calculating maximum volume flow. The flow in Pipe 1 and Pipe 2 is equal.

## 5 Conclusions and future work

An improved version of the DH module has been developed for eTransport. The new module includes the following improvements as opposed to the old module:

- Varying mass flow that depends on the heat load (both due to heat losses and demands at the load point), as opposed to constant mass flow
- Pressure included as a variable, with certain limits for minimum pressure and minimum pressure drop at the loads
- Calculation of pumping power is included in the module, and pumping power due to pressure losses in pipes and at loads is included in the objective function
- A more realistic calculation of heat losses included
- The module allows supply flow to both directions in a pipe; a property which is relevant when more heat sources are present in a DH grid.

It has to be emphasized that the new module has so far only been tested for a simple test net consisting of two supply points and two loads; and negative flow did not occur in this test net. Thus, it is

important that the module is tested for more complex systems. It is possible and even probable that there will be a need for improvements later on.

The new module has also a few limitations, to be regarded as suggestions for future work:

1. The value of maximum mass flow, applied for calculating pressure drops and pumping power due to friction losses in the pipes, is currently constant in each pipe. Its default value is calculated using a hypothetical value for maximum demand in the grid. A more sophisticated approach, potentially considering the maximum demand of the load furthest away, or the maximum demand of a single load in the network, should be applied, as discussed in section 4. A better approach may be to carry out a test simulation to calculate the maximum mass flow in each pipe, and use these values as an input in following simulations.
2. At present, both the supply and return temperatures are constant, with same values at each load and time step. In conventional high-temperature DH systems the supply temperature is a function of the outdoor temperature. In low-temperature systems, likely to become common in the future, the supply temperature may be kept constant throughout the year. eTransport will probably be applied to simulate both high- and low-temperature systems, and outdoor temperature compensation of the supply temperature should thus be included in the module. To be able to do this, the outdoor temperature at each time step as well as the desired maximum and minimum supply temperature limits should be included as input parameters.

Return temperature is a function of the inlet temperature, and depends also strongly on the heat exchange conditions at the loads. Dependency on the inlet temperature could be implemented simply with a constant temperature drop over a load. A more realistic approach would be to model heat exchange at the loads, which would increase the model complexity significantly. We hence suggest to implement the simple approach for calculating the return temperature: a constant temperature drop over a load.

3. The pumping power demand is presently included in the objective function of the DH module, however it could be made a demand input for electricity. In this case a conversion unit is required.
4. The original version of the DH module had some parameters that were omitted in the present version, but which may be useful to re-introduce:
  - a. *Time\_Delay* parameter, a delay for the water flowing from one end of a pipe to the other by a given number of time steps. This parameter should be included if it is desirable to include the thermal storage capacity of the network in the model.
  - b. The temperature requirement at loads, *set DH\_Load\_req*. The developer did not manage this, and a new requirement for minimum temperature at loads, equal for all loads and time steps, was introduced instead. This new parameter could however be made time-dependent and different for different loads, if desirable. In real systems, the minimum supply temperature at loads may be dependent on the ambient temperature, and different types of customers (e.g. apartment buildings vs. commercial buildings) may also have different temperature demands.
5. The extra pressure loss at loads closer to the heat supply was omitted, as discussed in section 3.4. This may lead into underestimation of the pumping power. An approach to include these losses should be developed, if this shortcoming is regarded considerable.
6. The module should have a way to set heat losses to zero if mass flow is zero, as discussed in section 3.2. Currently there is no such constraint.



## References

- Dalla Rosa, A. L. (2011). Method for optimal design of pipes for low-energy district heating, with focus on heat losses. *Energy*, 2407-2418.
- Fourer, R. G. (2003). *AMPL: A Modeling Language for Mathematical Programming*. Thomson.
- Fredriksen, S.;& Werner, S. (2014). *District heating and cooling*. Studentlitteratur AB.
- Kauko, H. K. (2018). Dynamic modeling of local district heating grids with prosumers: A case study for Norway. *Energy*, 261-271.
- Wallentèn, P. (1991). Steady-state heat loss from insulated pipes. LTH, Lunds Tekniska Högskola.

## A1. Appendix 1: Parameters, variables and sets

Type	Name	Definition	Default	Restrictions	Explanation
<b># Junction points and set of all points</b>					
set	DH_Junction_points		{}		Set containing junction points
set	DH_Points	:= DH_Load_points union DH_Production_points union DH_Junction_points			Set containing all points; load, junction and source/production points
set	DH_Directions	:= {"DH_OUT", "DH_BACK"};			Supply and return denoted by out and back: Out is water from the heater to the load. Back is the return water.
set	DH_Ends	:= {"DH_THIS", "DH_FAR"};			Ends of pipes, denoted by this and far. This is the end listed first in the ordered pair defining a pipeline, FAR is the end listed last. The end closest to the source should be listed first.
set	DH_Pipe_lines	within { DH_Points, DH_Points }			Set of all DH pipelines
param	DH_Water_flow	DH_Water_flow{ DH_Pipe_lines }	1		Old water flow, kept constant, not in use but cannot be removed without error message (the program uses it from outside the model).
param	DH_Time_delay	DH_Time_delay{DH_Pipe_lines} integer	0		Transportation time in pipes, currently not in use (how many time steps water entering a pipe is delayed before reaching exit)
param	DH_max_delay	:=max{(i,j) in DH_Pipe_lines} DH_Time_delay[i,j]			The longest transportation time in the pipe lines
<b>#Energy parameters</b>					
param	DH_Water_heating_factor	4.2			Total water flow multiplied by specific heat ( given in $MWh/(h*(m^3/s)*K)$ ): $m\dot{d}ot*c_p$
param	Users_heat_loss_factor	Users_heat_loss_factor{DH_Pipe_lines}	10		Heat loss factor for pipe lines defined by the user, in [W/m]
param	DH_Heat_loss_factor	DH_Heat_loss_factor{(i,j) in DH_Pipe_lines}	Users_heat_loss_factor[i,j]/40000000;		Heat loss factor in correct units: MW/m divided by temp. difference at test conditions for pipes (50 °C in pipe and assumed 10 °C for ambient). New unit is then [MW/(mK)]
param	DH_max_demand	DH_max_demand	0.7		Dimensioning load, applied for calculating the default value for maximum flow in the grid.
<b>#Heat loss and delivered load</b>					
var	Qless	Qless{(i,j) in DH_Pipe_lines, d in DH_Directions, e in			Variable equal to the heat removed from the water after it left the heat central.

Type	Name	Definition	Default	Restrictions	Explanation
		DH_Ends, t in Time_steps};			
<b>#Temperature parameters</b>					
param	DH_max_temp	DH_max_temp{ (i,j) in DH_Pipe_lines, d in DH_Directions }	120		Requirement for max DH temperature
param	DH_min_temp	DH_min_temp{ (i,j) in DH_Pipe_lines, d in DH_Directions }	15		Requirement for min DH temperature
param	T_supply		65		
param	T_min_supply		63		Minimum temperature requirement at loads.
set	DH_Load_req		{}		Load-dependent minimum temperature requirement. Currently unused
param	DH_water_temp	DH_water_temp{(i,j) in DH_Pipe_lines, d in DH_directions, e in DH_Ends, t in Time_steps}	1		Currently unused, but the program uses it from outside and an error message occurs if removed
set	DH_All_time_steps	:= -DH_max_delay+1 .. n_time_step			Old variable for some unknown purpose, not deleted
<b>#Pressure parameters and variables (new from the previous model)</b>					
param	DH_min_pressure	= 0.1			Minimum pressure in [MPa]
param	DH_max_pressure	= 0.5			Max pressure in [Mpa]. Max p is actually 10 bar, however as only return pressure is calculated, it is set to 5 bar = 0.5 Mpa
var	DH_pressure	DH_pressure { (i,j) in DH_Pipe_lines, e in DH_Ends, t in Time_steps }		>= DH_min_pressure <= DH_max_pressure -0.035;	Pressure in return line in [MPa]
param	cost_dp		500		To be deleted if power demand is converted to electric demand. In this case cost_dp= c_el/efficiency =500 kr/MWh *0.5 <sup>(-1)</sup> =1000 [kr/(MPa·m <sup>3</sup> /s·h)]
var	dp	dp { (i,j) in DH_Pipe_lines, t in Time_steps}		>=0	Pressure drop in pipes
var	dpN	dpN { (i,j) in DH_Pipe_lines, t in Time_steps}		<=0	Pressure drop in pipes for negative water flow.
param	dp_DH_Load		0.07		Guaranteed pressure drop across a load, set to 0.7 bar=0.07 MPa=70 kPa
param	Rvalue		150		Max allowed pressure drop per metre pipe at a given max water flow, set to 150 Pa/m
param	DH_Pipe_Length	DH_Pipe_Length { DH_Pipe_lines }	1000		Pipe length in m

Type	Name	Definition	Default	Restrictions	Explanation
param	max_water_flow	max_water_flow {(i,j) in DH_Pipe_lines}	DH_max_demand/(DH_Water_heating_factor*(T_min_supply-DH_min_temp[i,j,"DH_BACK"]))		Max flow in each pipe [m3/s]. The default value calculated from DH_max_demand/(DH_Water_heating_factor*(T_min_supply-DH_min_temp[i,j,"DH_BACK"]))
<b>#Water flow</b>					
var	DH_Waterflow	DH_Waterflow{ (i,j) in DH_Pipe_lines, t in Time_steps }		>=0	Variable for positive flow in pipes
var	DH_WaterflowN	DH_WaterflowN{ (i,j) in DH_Pipe_lines, t in Time_steps }		<=0	Variable for water flow in opposite direction.
<b>#Pumping power</b>					
param	pumpEff		0.5		Pump efficiency with a default value of 50%
var	PipePower	PipePower{(i,j) in DH_Pipe_lines, t in Time_steps};			Pumping power due to friction losses in pipes
var	LoadPower	LoadPower{I in DH_Load_points, t in Time_steps};			Pumping power due to throttling losses at loads
<b># within Load_points (part of older code)</b>					
param	DH_Input_temp_req	DH_Input_temp_req{ DH_Load_req };			Requirement for supply temperature at each load, currently not in use.
param	DH_deficit_penalty		100000000		Penalty for not covering demands
set	DH_Const_time_steps	:= {};			It is possible to insist that the outgoing temperature shall be fixed. Const_time_steps define a set of time steps for which the outgoing temperature should be the same
<b># Dump load</b>					
var	DH_dump_load	DH_dump_load{ DH_Production_points, Time_steps }		>=0	Amount of heat flow dumped at production points
var	DH_deficit1	DH_deficit1{ DH_Production_points, Time_steps }		>=0	Amount of insufficient heat flow at sources.
var	DH_deficit2	DH_deficit2{ DH_Load_points, Time_steps }		>=0	Amount of insufficient heat flow at loads, currently not calculated

## A2. Appendix 2: Objective function and the constraints

Constraint name	Sum/set definition	Function to be summed over / Equation	Explanation
<b># The main objective function</b>			
subject to DH_objective:			
objective["DISTRICT_HEATING"] =	-0.0001*sum{ p in DH_Production_points , t in Time_steps }	DH_dump_load[p,t]	Dumping of heat at production points
	+ sum{ p in DH_Production_points , t in Time_steps }	DH_deficit1[p,t]*DH_deficit_penalty	Insufficient heat at sources (production points)
	+ sum{ l in DH_Load_points, t in Time_steps }	DH_deficit2[l,t]*DH_deficit_penalty	Insufficient heat at loads
	+ sum{(i,j) in DH_Pipe_lines, t in Time_steps}	(2*PipePower[i,j,t])*cost_dp	Pumping power due to pressure losses in pipes
	+ sum{l in DH_Load_points, t in Time_steps}	(LoadPower[l,t])*cost_dp;	Pumping power due to pressure losses at loads
<b># Heat exchange in the heater central</b>			
subject to production_con	{ p in DH_Production_points , t in Time_steps } :		Heat required from a heat source: supply = demand
	sum { (s,p) in Supply2net }	Connection_loss_factor[s,p]*supply_flow[s ,p,t]	For supply points: Heat flow from a supply point times energy conversion factor (production efficiency?)
	+ sum { (s,p) in Net2net }	Connection_loss_factor[s,p]*net2net_flow [s,p,t] - DH_dump_load[p,t] + DH_deficit1[p,t]	For points connecting to different networks: Energy losses in conversion between the networks minus dumped heat plus heat deficit
	= sum{(p,i) in DH_Pipe_lines}	Qless[p,i,"DH_BACK","DH_THIS",t];	Heat demand in production point p: Qless in the "close" end of return line = heat demand at loads + heat lost in supply lines
<b># PRESSURE (NEW)</b>			
<b>#Set all pressures at the same point equal to one another</b>			
subject to pressure_t	{ (j,i) in DH_Pipe_lines, (i,k) in DH_Pipe_lines, t in Time_steps } :	DH_pressure[j,i,"DH_FAR",t] = DH_pressure[i,k,"DH_THIS",t];	Setting all pressures in the same points equal
subject to pressure_s	{ (i,j) in DH_Pipe_lines, (i,k) in DH_Pipe_lines, t in Time_steps } :	DH_pressure[i,j,"DH_THIS",t] = DH_pressure[i,k,"DH_THIS",t];	
subject to pressure_r	{ (j,i) in DH_Pipe_lines, (k,i) in DH_Pipe_lines, t in Time_steps } :	DH_pressure[j,i,"DH_FAR",t] = DH_pressure[k,i,"DH_FAR",t];	

Constraint name	Sum/set definition	Function to be summed over / Equation	Explanation
<b>#The lowest pressure in the system should always be DH_min_pressure</b>			
subject to pressure_minimum	{s in DH_Production_points, t in Time_steps }:	$\min\{(s,j) \text{ in DH\_Pipe\_lines}\} \text{DH\_pressure}[s,j,"DH\_THIS",t] = \text{DH\_min\_pressure};$	Setting pressure in source points equal to minimum pressure (1 bar)
<b>#Calculating pressure losses, for positive water flows, that is, DH_Waterflow&gt;0</b>			
subject to find_dp1	{ i in DH_Points, (j,i) in DH_Pipe_lines, t in Time_steps }:	$\text{dp}[j,i,t] \geq \text{Rvalue} * 10^{(-6)} * \text{DH\_Pipe\_Length}[j,i] * 0.24 * \text{DH\_Waterflow}[j,i,t] / \text{max\_water\_flow}[j,i];$	Calculation of the pressure drop using a piecewise linear equation for dp
subject to find_dp2	{ i in DH_Points, (j,i) in DH_Pipe_lines, t in Time_steps }:	$\text{dp}[j,i,t] \geq \text{Rvalue} * 10^{(-6)} * \text{DH\_Pipe\_Length}[j,i] * (-0.24 + 1 * \text{DH\_Waterflow}[j,i,t] / \text{max\_water\_flow}[j,i]);$	
subject to find_dp3	{ i in DH_Points, (j,i) in DH_Pipe_lines, t in Time_steps }:	$\text{dp}[j,i,t] \geq \text{Rvalue} * 10^{(-6)} * \text{DH\_Pipe\_Length}[j,i] * (-0.71 + 1.7 * \text{DH\_Waterflow}[j,i,t] / \text{max\_water\_flow}[j,i]);$	
subject to find_dp4	{ i in DH_Points, (j,i) in DH_Pipe_lines, t in Time_steps }:	$\text{dpN}[j,i,t] \leq \text{Rvalue} * 10^{(-6)} * \text{DH\_Pipe\_Length}[j,i] * 0.24 * \text{DH\_WaterflowN}[j,i,t] / \text{max\_water\_flow}[j,i];$	Same equations for negative flow
subject to find_dp5	{ i in DH_Points, (j,i) in DH_Pipe_lines, t in Time_steps }:	$\text{dpN}[j,i,t] \leq \text{Rvalue} * 10^{(-6)} * \text{DH\_Pipe\_Length}[j,i] * (-0.24 + 1 * \text{DH\_WaterflowN}[j,i,t] / \text{max\_water\_flow}[j,i]);$	
subject to find_dp6	{ i in DH_Points, (j,i) in DH_Pipe_lines, t in Time_steps }:	$\text{dpN}[j,i,t] \leq \text{Rvalue} * 10^{(-6)} * \text{DH\_Pipe\_Length}[j,i] * (-0.71 + 1.7 * \text{DH\_WaterflowN}[j,i,t] / \text{max\_water\_flow}[j,i]);$	
subject to NoFlowNodp	{ i in DH_Points, (j,i) in DH_Pipe_lines, t in Time_steps }:	$\text{dp}[j,i,t] \leq \text{Rvalue} * 10^{(-6)} * \text{DH\_Pipe\_Length}[j,i] * (\text{DH\_Waterflow}[j,i,t] / \text{max\_water\_flow}[j,i]);$	Preventing positive and negative flows at the same time.
subject to NoFlowNodpN	{ i in DH_Points, (j,i) in DH_Pipe_lines, t in Time_steps }:	$\text{dpN}[j,i,t] \geq \text{Rvalue} * 10^{(-6)} * \text{DH\_Pipe\_Length}[j,i] * (\text{DH\_WaterflowN}[j,i,t] / \text{max\_water\_flow}[j,i]);$	Same for negative flow.
subject to pressure_loss	{ (j,i) in DH_Pipe_lines, t in Time_steps }:	$\text{DH\_pressure}[j,i,"DH\_THIS",t] + \text{dp}[j,i,t] = \text{DH\_pressure}[j,i,"DH\_FAR",t];$	Adding the calculated pressure losses in the return pipe in the case when only positive flow is considered. Due to symmetry, only the return is calculated.
subject to pressure_loss	{ (j,i) in DH_Pipe_lines, t in Time_steps }:	$\text{DH\_pressure}[j,i,"DH\_THIS",t] + \text{dp}[j,i,t] = \text{DH\_pressure}[j,i,"DH\_FAR",t] - \text{dpN}[j,i,t];$	Same for the case when negative flow is included.
<b>#MASS FLOW</b>			
subject to water_flow	{ p in DH_Junction_points, t in Time_steps }:	$\sum\{(l,p) \text{ in DH\_Pipe\_lines}\} (\text{DH\_Waterflow}[l,p,t]) = \sum\{(p,j) \text{ in DH\_Pipe\_lines}\} (\text{DH\_Waterflow}[p,j,t]);$	Mass balance equation for all points
subject to water_flow	{ p in DH_Junction_points, t in Time_steps }:	$\sum\{(l,p) \text{ in DH\_Pipe\_lines}\} (\text{DH\_Waterflow}[l,p,t] + \text{DH\_WaterflowN}[l,p,t]) = \sum\{(p,j) \text{ in DH\_Pipe\_lines}\} (\text{DH\_Waterflow}[p,j,t] + \text{DH\_WaterflowN}[p,j,t]);$	Mass balance equation for the two-way model. Works only if everything is coupled to junctions.

Constraint name	Sum/set definition	Function to be summed over / Equation	Explanation
subject to NoExtraWaterFlowLoad{	{l in DH_Load_points, (i,l) in DH_Pipe_lines, t in Time_steps}:	DH_WaterflowN[i,l,t]=0;	Ensuring that there is no negative flow at loads
subject to NoExtraWaterFlowSource	{s in DH_Production_points , (s,i) in DH_Pipe_lines, t in Time_steps}:	DH_WaterflowN[s,i,t]=0;	Ensuring that there is no negative flow at sources
<b>#MASS, HEAT AND TEMPERATURE DEMANDS</b>			
subject to TempRequirement	{l in DH_Load_points, (i,l) in DH_Pipe_lines, t in Time_steps}:	$Q_{less}[i,l,"DH\_OUT","DH\_FAR",t] \leq DH\_Water\_heating\_factor * (T\_supply - T\_min\_supply) * DH\_Waterflow[i,l,t];$	Sets the temperature drop within pipes due to heat loss to be within allowed range. Not in use at present.
subject to TempMass	{l in DH_Load_points, (i,l) in DH_Pipe_lines, (l,j) in Net2load, t in Time_steps}:	$Q_{less}[i,l,"DH\_OUT","DH\_FAR",t] + load\_flow[l,j,t] \leq DH\_Water\_heating\_factor * (T\_supply - DH\_min\_temp[i,l,"DH\_BACK"]) * DH\_Waterflow[i,l,t];$	Demand that the water flow covers the demand in a realistic temp range
subject to TempMassSource	{p in DH_Production_points , (p,i) in DH_Pipe_lines, t in Time_steps}:	$DH\_Waterflow[p,i,t] \leq Q_{less}[p,i,"DH\_BACK","DH\_THIS",t] / DH\_Water\_heating\_factor;$	For sources: ensures that waterflow is zero if there is no heat flow from the source; and that heat flow is nonzero if waterflow is nonzero.
<b>#HEAT FLOW</b>			
subject to HeatCentral	{s in DH_Production_points , t in Time_steps, (s,i) in DH_Pipe_lines}:	$Q_{less}[s,i,"DH\_OUT","DH\_THIS",t] \geq 0;$	Requiring that lost heat is always lost - for pipes out of production points. Shall be equal to 0, but better to allow inequality to avoid errors.
subject to HeatLossIsLoss	{t in Time_steps, l in DH_Load_points, (i,l) in DH_Pipe_lines}:	$Q_{less}[i,l,"DH\_OUT","DH\_THIS",t] \geq 0;$	Same for supply lines going in to loads. Without this requirement, the lost heat may be heat input to the system.
subject to HeatLossFromLoad	{t in Time_steps, l in DH_Load_points, (i,l) in DH_Pipe_lines}:	$Q_{less}[i,l,"DH\_BACK","DH\_FAR",t] \geq 0;$	Same for return lines going out from a load.
subject to HeatLossIsLossJunction	{t in Time_steps, j in DH_Junction_points, (j,i) in DH_Pipe_lines}:	$Q_{less}[j,i,"DH\_OUT","DH\_THIS",t] \geq 0;$	The same requirement for supply lines going to junction points.
subject to PipeLosses	{(i,j) in DH_Pipe_lines, t in Time_steps}:	$Q_{less}[i,j,"DH\_OUT","DH\_FAR",t] = Q_{less}[i,j,"DH\_OUT","DH\_THIS",t] + DH\_Pipe\_Length[i,j] * (T\_supply - Outdoor\_temp[t]) * DH\_Heat\_loss\_factor[i,j];$	Calculating the heat losses and adding them to the far end of the supply lines. Uncertain if this will work for negative flow
subject to NoPipeLosses	{(i,j) in DH_Pipe_lines, t in Time_steps}:	$Q_{less}[i,j,"DH\_BACK","DH\_FAR",t] = Q_{less}[i,j,"DH\_BACK","DH\_THIS",t];$	Requirement that there are no losses in the return line (realistic approximation).
subject to EnergyBalanceOut	{p in DH_Junction_points, t in Time_steps}:	$sum\{(i,p) \text{ in } DH\_Pipe\_lines\} Q_{less}[i,p,d,"DH\_OUT","DH\_FAR",t] = sum\{(p,j) \text{ in } DH\_Pipe\_lines\} Q_{less}[p,j,d,"DH\_OUT","DH\_THIS",t];$	Energy balance equation for the junction points for supply lines

Constraint name	Sum/set definition	Function to be summed over / Equation	Explanation
subject to EnergyBalanceBack	{p in DH_Junction_points, t in Time_steps):	sum{(i,p) in DH_Pipe_lines} Qless[i,p,d,"DH_BACK","DH_FAR",t]= sum{(p,j) in DH_Pipe_lines} Qless[p,j,d,"DH_BACK","DH_THIS",t];	Energy balance equation for the junction points for return lines
subject to LoadHeat	{l in DH_Load_points, t in Time_steps):	sum{(i,l) in DH_Pipe_lines} Qless[i,l,"DH_OUT","DH_FAR",t]+ sum { (l,p) in Net2load } load_flow[l,p,t] =sum{(i,l) in DH_Pipe_lines} Qless[i,l,"DH_BACK","DH_FAR",t];	Taking out heat at load=Adding heat loads to the Qless-variable in the return line
#POWER			
<b>#Calculation of the pumping power due to pressure losses in pipes using a piecewise linear equation</b>			
subject to dpPowerPipe1	{(i,j) in DH_Pipe_lines, t in Time_steps):	PipePower[i,j,t]*pumpEff>=0.1075*(DH_Waterflow[i,j,t]-DH_WaterflowN[i,j,t])/max_water_flow[i,j] * Rvalue*10 <sup>(-6)</sup> *DH_Pipe_Length[i,j]*max_water_flow[i,j];	Calculation for the required pumping power due to friction losses in pipes.
subject to dpPowerPipe2	{(i,j) in DH_Pipe_lines, t in Time_steps):	PipePower[i,j,t]*pumpEff>=(-0.3749+1.0044*(DH_Waterflow[i,j,t]-DH_WaterflowN[i,j,t])/max_water_flow[i,j] ) *Rvalue*10 <sup>(-6)</sup> *DH_Pipe_Length[i,j]*max_water_flow[i,j];	
subject to dpPowerPipe3	{(i,j) in DH_Pipe_lines, t in Time_steps):	PipePower[i,j,t]*pumpEff>=(-1.3317+2.3095*(DH_Waterflow[i,j,t]-DH_WaterflowN[i,j,t])/max_water_flow[i,j] ) * Rvalue*10 <sup>(-6)</sup> *DH_Pipe_Length[i,j]*max_water_flow[i,j];	
<b>#Calculate required power for pumping due to throttling losses at loads</b>			
subject to dpPowerLoad	{ l in DH_Load_points, (i,l) in DH_Pipe_lines, t in Time_steps):	LoadPower[l,t]*pumpEff=dp_DH_Load*Qless[i,l,"DH_BACK","DH_FAR",t]/(T_supply-DH_min_temp[i,l,"DH_BACK"])/DH_Water_heating_factor;	







**VISION:**

**«Sustainable  
neighbourhoods  
with zero  
greenhouse gas  
emissions»**

# Z E N

Research Centre on  
ZERO EMISSION  
NEIGHBOURHOODS  
IN SMART CITIES



<https://fmezen.no>